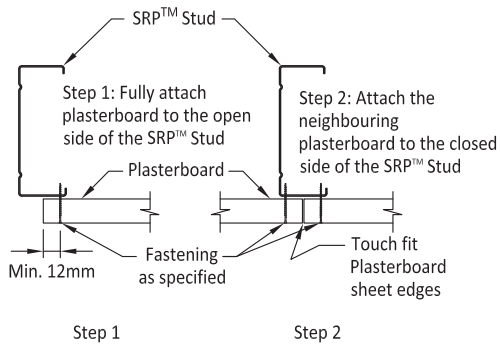
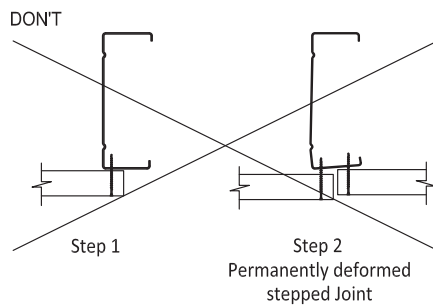


**FIGURE 24** Correct Plasterboard Fastening Order

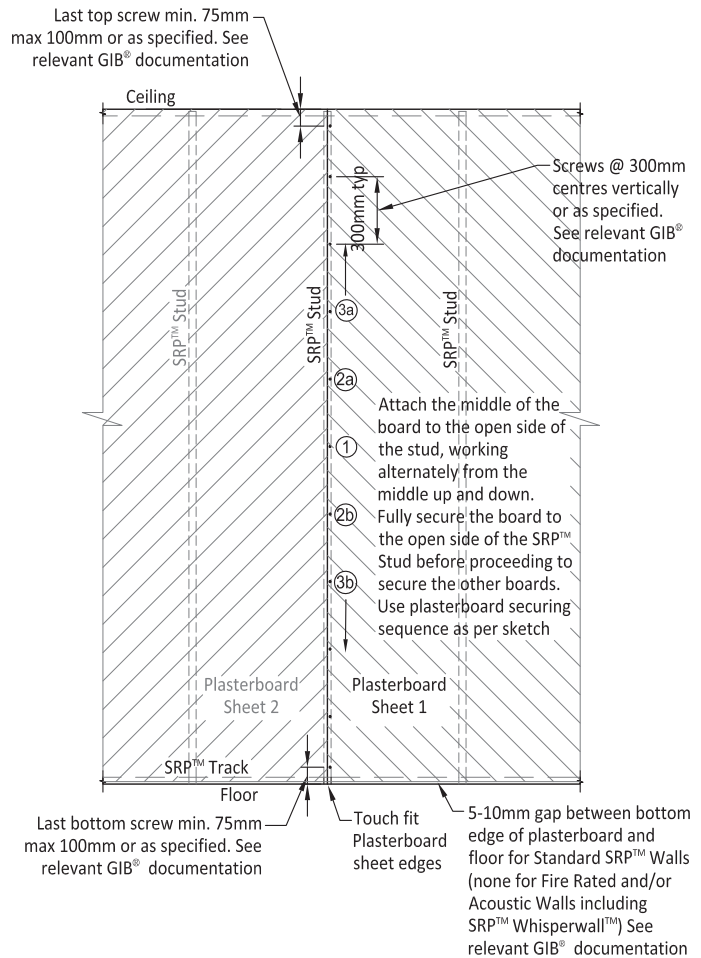


**FIGURE 25** Fastening the Lining – Don't



Using the reverse fastening direction as indicated on previous figure could cause permanently deformed Stud and stepped joint. **Not recommended method.**

**FIGURE 26** Fastening the Linings – Vertical Plasterboard Position Only



**FIGURE 27** Plasterboard Fastening Sequence

